

Account # _____
 Phone _____
 Bill to _____

 Purchase Order # _____
 Account Contact _____
 Email Address _____

Occipital Cradle Headrest HCPCS Order Form

Authorized By _____
 Fax # _____
 Ship To _____

 Date _____
 Client Name _____

STANDARD FEATURES

- 6 month warranty on all hardware
- 90 day warranty on all padding
 - Contoured Head & Neck Support
 - Neck support at occipital ledge
 - Light Weight
 - Small Occipital Head Cradle
 - Bendable wings for increased support
 - Metal cage for support
 - Sunmate foam with batting
 - Medium Occipital Head Cradle
 - Bendable wings for increased support
 - Metal cage for support
 - Sunmate foam with batting
 - Large Occipital Head Cradle
 - Bendable wings for increased support
 - Metal cage for support
 - Sunmate foam with batting

OPTIONAL FEATURES

- Available on All Occipital Head Cradles
 - Wire Mesh Insert for Added Strength

OCCIPITAL CRADLES WITH HARDWARE

Codes: E0955 & E1028

- 230S Small Occipital Cradle Headrest.....\$410.00
- 231S Small Occipital Cradle Headrest
w/Wire Mesh Insert.....\$430.00
- 230M Medium Occipital Cradle Headrest.....\$450.00
- 231M Medium Occipital Cradle Headrest
w/Wire Mesh Insert.....\$470.00
- 230L Large Occipital Cradle Headrest.....\$490.00
- 231L Large Occipital Cradle Headrest
w/Wire Mesh Insert.....\$510.00

Code: E0966

- B-169S 4" Extension for Positive Locking Multi-Axis
Headrest Hardware.....\$100.00
- B-169 6" Extension for Positive Locking Multi-Axis
Headrest Hardware.....\$125.00
- B-169L 8" Extension for Positive Locking Multi-Axis
Headrest Hardware.....\$150.00

Extensions Available for Multi-axis Offset Headrest Hardware Just Ask!

Code: E1028

Select Headrest Mounting Hardware

- Multi-Axis Offset Headrest Hardware
- Positive Locking Multi-Axis Headrest Hardware

**Multi-Axis
Offset Headrest Hardware**



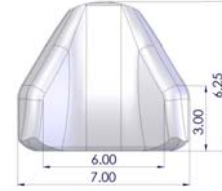
**Seating System
Mounting Bracket**

**Positive Locking
Multi-Axis Headrest Hardware**



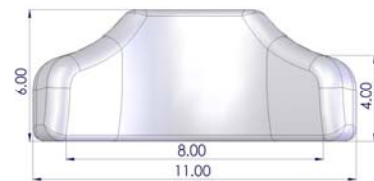
**Seating System
Mounting Bracket**

CONTOURED HEAD & NECK SUPPORT – 230C



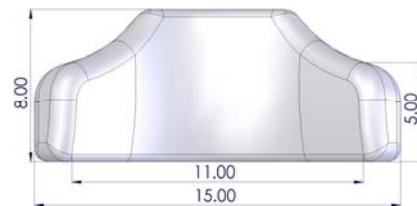
E0955

SMALL – 230S



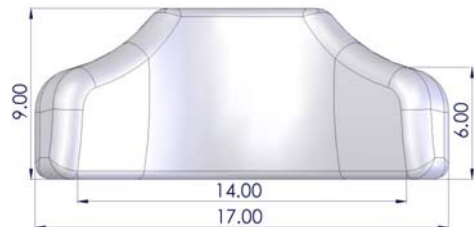
E0955

MEDIUM – 230M



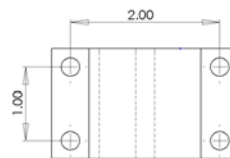
E0955

LARGE – 230L



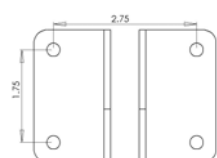
E0955

**Multi-Axis
Offset Headrest Hardware**



E1028

**Positive Locking
Multi-Axis Headrest Hardware**



E1028

NOTE: HCPCS Codes provided were determined by SADMERC and/or interpretations of the codes. Proper use of codes does not ensure coverage or payment. Please contact a Medicare professional for further assistance.

Codes: E0955

OCCIPITAL CRADLES WITHOUT HARDWARE

- A-310 Small Occipital Cradle Headrest Top.....\$275.00
- A-310WM Small Occipital Cradle Headrest
w/Wire Mesh Insert Top.....\$310.00
- A-311 Medium Occipital Cradle Headrest Top.....\$325.00
- A-311WM Medium Occipital Cradle Headrest
w/Wire Mesh Insert Top.....\$360.00
- A-313 Large Occipital Cradle Headrest Top.....\$375.00
- A-313WM Large Occipital Cradle Headrest
w/Wire Mesh Insert Top.....\$410.00

Code: E1028

OCCIPITAL CRADLE MOUNTING HARDWARE

- A-309MA Occipital Cradle Mounting Hdw. Assem.....\$350.00
 - Multi-Axis Offset Headrest Hardware
- A-309 Occipital Cradle Mounting Hdw. Assem.....\$350.00
 - Positive Locking Multi-Axis Headrest Hardware

REPLACEMENT PARTS

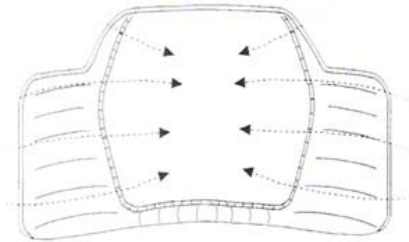
- S-081 Small Occipital Cradle Headrest Cover.....\$125.00
- S-082 Medium Occipital Cradle Headrest Cover.....\$135.00
- S-083 Large Occipital Cradle Headrest Cover.....\$145.00
-
-
-
-

**Headrest Flexibility
(Shown Below)**

**Headrest Indentation
(Shown Below)**

Oversized Bendable Wings
Always keeps the head within the "Occipital Cradle"

Designed to bring the head back to mid-line, at all times



NOTE: HCPCS Codes provided were determined by SADMERC and/or interpretations of the codes. Proper use of codes does not ensure coverage or payment. Please contact a Medicare professional for further assistance.