

SEATING & POSITIONING

HCPCS

Made in the U.S.A.



Date

Account #

Account Contact

Company

First Name

Last Name

Phone Number

Shipping Address

Billing Address

Street Address

Street Address

City

State

City

State

Zip Code

Zip Code

Email

Comments



GUNNELL INC.
MOBILITY SOLUTIONS



PHONE: 800-551-0055

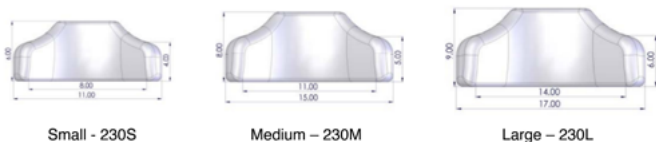


WEBSITE: GUNNELL-INC.COM



Occipital Cradles With Hardware

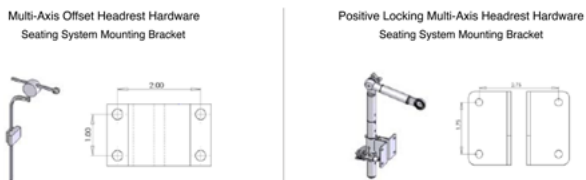
E0955



Headrest

Codes: E0955 & E1028

- 230S Small Occipital Cradle Headrest - \$506.25
- 230M Medium Occipital Cradle Headrest - \$533.25
- 230L Large Occipital Cradle Headrest - \$607.50
- 230SP - Small Occipital Cradle Headrest w/ Positive Locking Hardware - \$506.25
- 230MP - Medium Occipital Cradle Headrest w/ Positive Locking Hardware - \$533.25
- 230LP - Large Occipital Cradle Headrest w/ Positive Locking Hardware - \$607.50



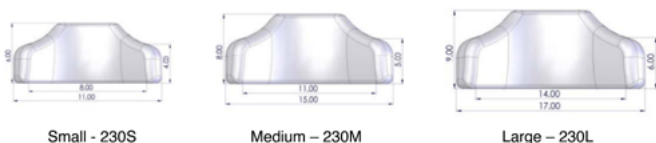
Extension for Positive Locking Multi-Axis Headrest Hardware

Code: E0966 - Extensions Available for Multi-axis Offset Headrest Hardware Just Ask!

- B-169S 4" Extension for Positive Locking Multi-Axis Headrest Hardware - \$135
- B-169 6" Extension for Positive Locking Multi-Axis Headrest Hardware - \$168.75
- B-169L 8" Extension for Positive Locking Multi-Axis Headrest Hardware - \$202.50

Occipital Cradles Without Hardware

E0955



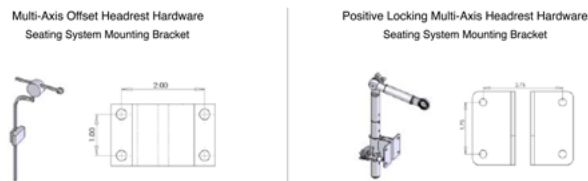
Occipital Cradles

Codes: E0955

- A-310 Small Occipital Cradle Headrest - \$283.50
- A-311 Medium Occipital Cradle Headrest - \$310.50
- A-313 L Large Occipital Cradle Headrest - \$384.75

Occipital Cradle Mounting Hardware

Code: E1028



- A-309MA Multi-Axis Offset Headrest Hardware \$418.50
- A-309 Positive Locking Multi-Axis Headrest Hardware \$418.50

Seating Packages

Code: E1028

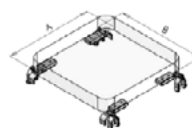


Solid Seat

Code/s: E2607 or E2608 and/or K0108

- 020S Solid Seat Base with Standard Hardware - \$540
- 020Q Solid Seat Base with Quick Release Hardware - \$607.50
- 020SN Solid Seat Base No Hardware - \$405

Solid Seat Dimensions



Side A

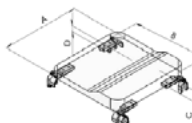
Side B

Anti-Thrust Seat

Code/s: E2607 or E2608 and/or K0108

- 030S Anti-thrust Seat Base with Standard Hardware - \$607.50
- 030SQ Anti-thrust Seat Base with Quick Release Hardware - \$675
- 030SN Anti-thrust Seat Base with No Hardware - \$438.75

Anti-Thrust Seat Dimensions



Side A

Side C

Side B

Side D

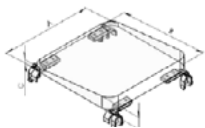


Wedge Seat

Code/s: E2607 or E2608 and/or K0108

- 040S Wedge Seat with Standard Hardware - \$607.50
- 040SQ Wedge Seat with Quick Release Hardware - \$675
- 040SN Wedge Seat Base with No Hardware - \$438.75

Wedge Seat Dimensions



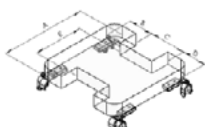
Side A C
Side B D

I Modification Seat

Code/s: E2607 or E2608 and/or K0108

- 050SQ I-Modification Seat Base with Quick Release Hardware - \$742.50
- 050SN I-Modification Seat Base with No Hardware - \$540

I Modification Seat Dimensions



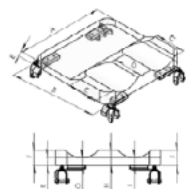
Side A Side D
Side B Side E
Side C

Contoured Seat

Code/s: E2607 or E2608 and/or K0108

- 060S Contoured Seat Base with Standard Hardware - \$708.75
- 060Q Contoured Seat Base with Quick Release Hardware - \$776.25
- 060SN Contoured Seat Base with No Hardware - \$573.75

Contoured Seat Dimensions



Side A F
Side B G
Side C H
Side D I
Side E

NOTE: HCPCS Codes provided were determined by SADMERC and/or interpretations of the codes. Proper use of codes does not ensure coverage or payment. Please contact a Medicare professional for further assistance.

Seating Hardware

Quick Release Seating Hardware



Standard Seating Hardware



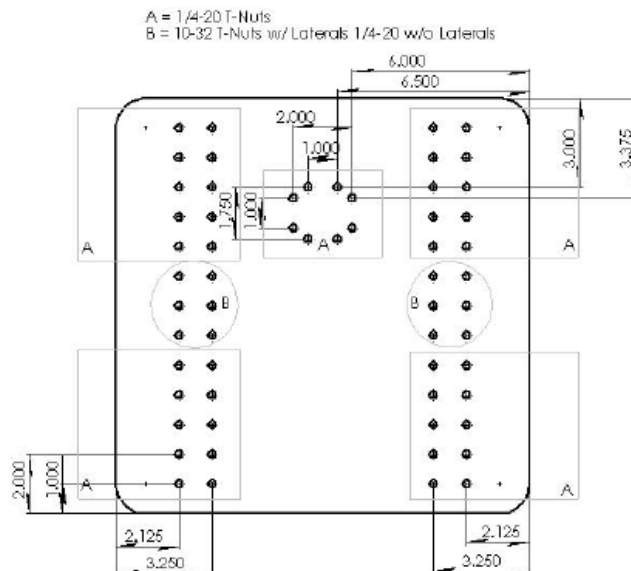
Choose Your Seating Hardware K0108

- QRSH Quick Release Seating Hardware \$222.75
- SAH Standard Seating Hardware \$189
- 399 Custom Seating Hardware Quote Only

Custom Hardware is available upon request. Please Ask!

Seating Configuration Chart

A (center) = Attachment holes for an Abductor Bracket
B = Attachment holes for Hip Pad Brackets and/or Lateral Support Brackets



Trays

Code/s: E0950 and/or K0108



531 Polycarbonate Tray with Black PVC Rim w/Straps

- 531C Child Size \$472.50
- 531A Adult Size \$506.25
- 531X X-Wide Size \$540
- 5312X 2X-Wide Size \$573.75
- 53112 Fits 12" Wide Chair \$472.50
- 53114 Fits 14" Wide Chair \$492.75
- 53116 Fits 16" Wide Chair \$513
- 53118 Fits 18" Wide Chair \$540

Add Ons

- 532 Polycarbonate Tray Trough Style Hardware \$675
- 533 Polycarbonate Tray EZ Lock Clamp Hardware \$810
- 534T Polycarbonate Tray with Padding \$1,059.75

Tray Hardware

- 532 Polycarbonate Tray Trough Style Hardware \$675
- 533 Polycarbonate Tray EZ Lock Clamp Hardware \$810
- 534T Polycarbonate Tray with Padding \$1,059.75

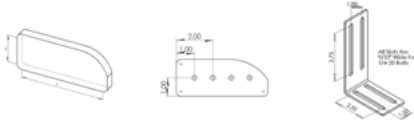
Gel Cushions

High Density Leak Proof Gel Packs with Sunmate Foam Incasement - Code: E2609

399 Custom Gel Cushion Quote Only

Hip Pads

Code: E0956



656XN Hip Pads without Hardware \$202.50/pair
656X Hip Pads with Hardware \$151.20/pair

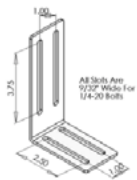
Hip Pad Dimensions

H L

NOTE: HCPCS Codes provided were determined by SADMERC and/or interpretations of the codes. Proper use of codes does not ensure coverage or payment. Please contact a Medicare professional for further assistance.

Hip Pad Hardware

Code: E0956



656X Hip Pads with Hardware \$151.20/pair

Abductors

(All Abduction Systems Use 1/4-20 Bolts & Nuts)

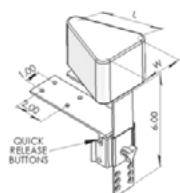


Flip Down Abduction System with Adjustable Pummel

Code/s: E0957 and E1028

A-035MA Flip Down Abduction System with Adjustable Pummel - \$546.75

Flip Down Abduction System with Adjustable Pummel Dimensions

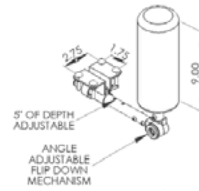


H

L

Flip Down Abduction System with Depth Adjustment

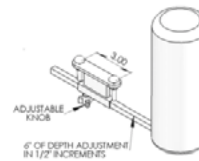
Code/s: E0957 and E1028



A035 Flip Down Abduction System with Depth Adjustment - \$546.75

Regular Scissor Board Abduction System with Depth Adjustment

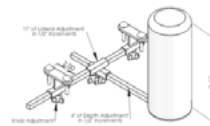
Code/s: E0957 and E1028



A029 Regular Abduction System with Depth Adjustment - \$303.75

Laterally Adjustable Regular Abduction System with Depth Adjustment

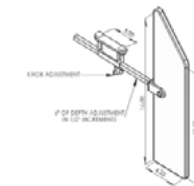
Code/s: E0957 and E1028



A030 Laterally Adjustable Regular Abduction System with Depth Adjustment - \$405

Regular Scissor Board Abduction System with Depth Adjustment

Code/s: E0957 and E1028

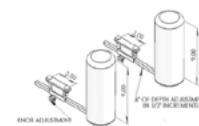


A033 Regular Scissor Board Abduction System with Depth Adjustment - \$337.50

A034 Laterally Adjustable Scissor Board - \$444.29

Regular Adduction System with Depth Adjustment

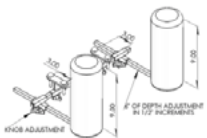
Code/s: E0957 and E1028



A031 Regular Adduction System with Depth Adjustment - \$607.50

Laterally Adjustable Regular Adduction System with Depth Adjustment

Code/s: E0957 and E1028



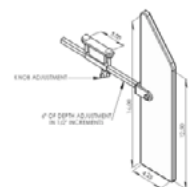
A032 Laterally Adjustable Regular Adduction System with Depth Adjustment - \$742.50

NOTE: HCPCS Codes provided were determined by SADMERC and/or interpretations of the codes. Proper use of codes does not ensure coverage or payment. Please contact a Medicare professional for further assistance.

Abductor Hardware

Regular Scissor Board Abduction System with Depth Adjustment

Code/s: E0957 and E1028



A034 Laterally Adjustable Scissor Board - \$444.29

Abductor Replacement Parts

S067 Abductor/Adductor Fleece Cover	\$50.42	QTY
S072 Scissor Board Fleece Cover	\$50.42	QTY
S068 Abductor/Adductor Dartex Cover	\$102.40	QTY
S070 Scissor Board Dartex Cover	\$102.40	QTY
SPU102 Med. Abductor Pad	\$104.36	QTY

Positioning Accessories

Hip Belts



Single Closure Hip Belts



4 Point Single Closure Hip Belts

All positioning belts shown with pads and attach to chair with grommets (All Hip Belts attached using 1/4-20 Bolts, Nuts, and/or T-Nuts)

651 & 652 Single Closure Hip Belts

Code: E0960 - 600 (not pictured)

S025 1.5" Hip Belt with Metal Buckle No Pad	\$283.50
S026 2" Hip Belt with Metal Buckle No Pad	\$290.25
652 1.5" Hip Belt with Plastic Buckle No Pad	\$249.75
600 Hook-n-Loop Closure Belt	\$229.50
HB 205-62 Bodypoint 1.5" Hip Belt Center-Pull with Plastic Buckle	\$279.75

Add-ons

337 Add Hip Belt Pad \$40.50

Hip Belt with Metal Buckle No Pad Size

Small 20"
Medium 30"
Large 40"
Custom

601 & 602 4 Point Single Closure Hip Belts

Code: E0960

601 1.5" 4-Point Hip Belt with Metal Buckle No Pad \$297
602 1.5" 4-Point Hip Belt with Plastic Buckle No Pad \$270

Hip Belt with Metal Buckle No Pad Size

Small 20"
Medium 30"
Large 40"
Custom

Add-ons

337 Add Hip Belt Pad \$40.50

LH600L Bodypoint Padded Leg Harness \$312.15

Chest Straps

D-Ring used with Chest Strap Ring Style and 1/2" Pad and each can be made to custom lengths.

S022 Chest Strap Ring Style 4" Black with Velcro 46"	\$229.50
S023 Chest Strap Ring Style 4" Black with Fastex Buckle	\$266.69
S037 Chest Strap Regular 2" Black with Velcro	\$182.25
S056 Chest Strap Ring Style 4" Black Extra Long 58"	\$267.30
S058 Chest Strap Ring Style 4" Shoulder Straps & Fastex Buckle	\$328.65

H-Harness

Code: S035

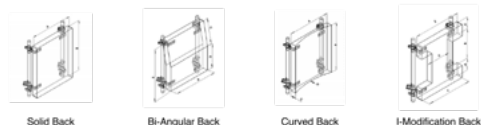


Small 2" x 8"	\$263.25
Medium 2" x 9.5"	\$263.25
Large 2.5" x 11.75"	\$263.25
X-Large 2.5" x 14"	\$263.25
SH224 Large Bodypoint	\$312.15

NOTE: HCPCS Codes provided were determined by SADMERC and/or interpretations of the codes. Proper use of codes does not ensure coverage or payment. Please contact a Medicare professional for further assistance.

Back Rest Packages

(All Packages Shown with Quick Release Hardware)

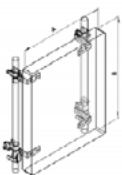


Solid Seat

Code/s: E2613 or 2614 and/or K0108

- 020N Solid Back Base with No Hardware \$371.25
- 020B Solid Back Base with Standard Hardware \$540
- 020BQ Solid Back Base with Quick Release Hardware \$607.50

Solid Seat Dimensions



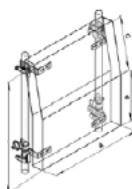
Side A
Side B

Bi-Angular Back

Code/s: E2613 or 2614 and/or K0108

- 030BN Bi-Angular Back Base with No Hardware \$438.75
- 030B Bi-Angular Back Base with Standard Hardware \$607.50
- 030BQ Bi-Angular Back Base with Quick Release Hardware \$675

Bi-Angular Back Dimensions



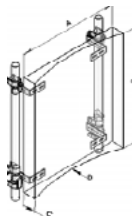
Side A
Side B
Side C
Side D

Curved Back

Code/s: E2613 or 2614 and/or K0108

- 040BN Curved Back Base with No Hardware \$438.75
- 040B Curved Back Base with Standard Hardware \$607.50
- 040BQ Curved Back Base with Quick Release Hardware \$675

Curved Back Dimensions



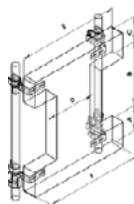
Side A
Side B
Side C
Side D

I-Modification Back

Code/s: E2613 or 2614 and/or K0108

- 050BN I-Modification Back Base with No Hardware \$506.25
- 050B I-Modification Back Base with Standard Hardware \$675
- 050BQ I-Modification Back Base with Quick Release Hardware \$742.50

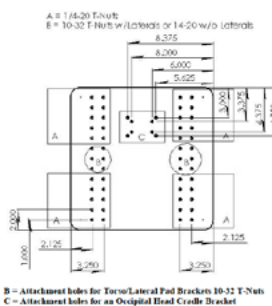
I-Modification Back Dimensions



Side A
Side B
Side C
Side D
Side E
Side F

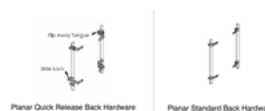
Planar Back Configuration Chart

B = Attachment holes for Torso/Lateral Pad Brackets 10-32 T-Nuts
C = Attachment holes for an Occipital Head Cradle Bracket



Planar Hardware

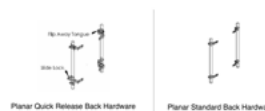
Code: K0108



- QRBH Quick Release Back Hardware \$330.75
- BAH Standard Back Hardware \$220.59
- No Hardware N/C

Back Rest Hardware

Code: K0108



- QRBH Quick Release Back Hardware \$330.75
- BAH Standard Back Hardware \$220.59
- No Hardware N/C